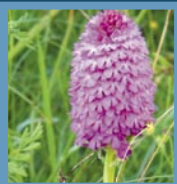




Clare Heritage Circle

CIORCAL OIDHREACHTA AN CHLÁIR



The Clare Heritage Circle

The Clare Heritage Circle combines all the best of Clare's varied culture. The members of this circle will help you discover the diverse landscape, built heritage, natural and marine treasures and archaeology of County Clare.

From Tuamgraney's lakeland shores, through Ennis and the rugged Burren and on to the estuarine coastline of Kilrush, you will encounter all that is great about the Banner County.

We invite you to visit and interact with the people of Clare, where a real welcome awaits you. All the members of the Heritage Circle will be delighted to meet you and explain the glories of Clare.



CIORCAL OIDHREACHTA AN CHLÁIR

TÓGANN CIORCAL OIDHREACHTA AN CHLÁIR CULTÚR ÉAGSÚLA AN CHLÁIR SAN ÁIREAMH. CABHRÓIDH BAILL DEN CHOIRCAL SEO THÚ A FHÁIL AMACH FAOI THÍRDHREACH ILGHNÉITHÉACH, OIDHREACHT TAIRBHEACH, TAISCE MUIRÍ NÁDÚRTHA AGUS SEANDÁLAÍOCHT AN CHLÁIR.

Ó THÍRLOCH TUAMGRAINE, TRÍ INIS AGUS AN BOIREANN GARBH CHOIMH FADA LE CÓSTA MANTACH CILL ROIS, GHEOBHAIDH TÚ AMACH GACH RUD FIÚNTACH FAOI CHONTAE AN CHLÁIR.

CUIRIMID FÁILTE ROMHAT DUL I DTEANGHÁIL LE MUINTEAR AN CHLÁIR, ÁIT A BHFUIL FÍORFHÁILTE ROMHAT. BEIDH BAILL DEN CHOIRCAL OIDHREACHTA AN-SÁSTA BUALADH LEAT AGUS MÍNIÚ A THABHAIRT DUIT AR GHLOIR AN CHLÁIR.



Clare Heritage Circle

CIORCAL OIDHREACHTA AN CHLÁIR

Quick Reference Directory

East Clare Heritage Centre	☎ 061-921351 or 086-874 9710
Clare Museum	☎ 065-682 3382
Dysert O'Dea	☎ 065-683 7305
Clare Heritage Centre	☎ 065-683 7955
The Burren Centre	☎ 065-708 8030
Lahinch Seaworld	☎ 065-708 1900
Vandeleur Walled Garden	☎ 065-905 1760
Shannon Dolphins	☎ 065-905 2326 or 086-854 5450

For any information on the Clare Heritage Circle, please contact Ennis Tourist Office @065-6828366



Tourist Information



For additional information on what to do or see during your stay in Clare, for organising accommodation or picking up brochures and maps or even buying crafts, gifts and other souvenirs, be sure to visit the a Shannon Region Tourist Centre. There are a number of Shannon Region Tourist Centres dotted around Clare—in Ennis, the Cliffs of Moher, Kilrush, Kilkee and Shannon International Airport—all have a wide range of free and purchasable items to help you enjoy your stay, and all have helpful welcoming staff.

The Clare Heritage Circle would like to acknowledge the support of Clare County Council, The Heritage Council and the Clare Museum in the production of this brochure. The Clare Heritage Circle was set up under the auspicious of the The County Clare Heritage Plan 2003–2007. A partnership Heritage Plan for County Clare prepared by the County Clare Heritage Forum.



An Chomhairle Oidhreachta



The Heritage Council



Produced with the support of Clare County Council, the Heritage Council and the Clare Museum



Map to Attractions



An aerial photograph of a small, rectangular island in a large body of water. The island is covered in lush green grass and scattered trees. A white building with a steeple is visible on the right side of the island. A small boat is moored near the shore. The water is dark blue, and other landmasses are visible in the background.

East Clare Heritage Centre.....	1
Clare Museum	2
Dysert O’Dea	3
Clare Heritage Centre.....	4
The Burren Centre	5
Lahinch Seaworld	6
Vandeleur Walled Garden	7
Shannon Dolphins.....	8

The Clare Heritage Circle

Dedicated to promoting and sharing
the unique heritage of our County.

“AG IARRAIDH OIDHREACHT EISCEACHTIÚLA
ÁR GCONTAÉ A CHUR CHUN CINN AGUS A ROINN”

East Clare Heritage Centre

Tuamgraney, County Clare

*Follow in the footsteps of Brian Boru
High King of Ireland 1002–1014*



Map Reference: ①

Inis Cealtra, Mountshannon

Telephone: 061-921351 or
086-874 9710.

E-mail: eastclareheritage@eircom.net
Visit: www.eastclareheritage.ie

Boat Trips and Guided Tours daily.

Tuamgraney is one of the most notable, ecclesiastical and historical places in Ireland. It's pagan past is recorded in its townland names, in pillar stones and holy wells. It's monastic past is recorded in the Annals and in the lives of the saints. Brian Boru worshipped here and repaired St. Cronan's church in 1012.

While in Tuamgraney look out for:

- O'Grady's 16th Century Castle
- The oldest Oak tree in Ireland
- The Garden of Remembrance
- The Famine memorial Park and

- Pass through the same doorway as High King Brian Boru did a thousand years ago.

No visit to East Clare would be complete without a visit to the famous monastic site of Holy Island (Inis Cealtra) on Lough Derg.

Avail of a guided tour and see the many attractions including

- A well-preserved Round Tower
- The ruins of six churches
- A Holy Well
- The Saints Graveyard

And much more

Clare Museum

Ennis, County Clare



Map Reference: ②

Telephone: 065-682 3382

E-mail: claremuseum@eircom.net
Visit: www.clarelibrary.ie

Open Oct – May. Tue – Sat, 09.30 – 17.00 hrs.
Open Jun – Sep. Mon – Sat, 09.30 – 17.00 hrs., Sun 14.00 – 17.00

Tourist Information Office on site
Public parking for buses and cars.

Clare is a remarkable county and the story of its people stretch back some 6,000 years. Its incredible history is excitingly captured in the Riches of Clare exhibition at Clare Museum. Beautifully displayed artefacts, original works of art, enthralling audio-visual and interactive experiences combine to provide an exciting glimpse into the rich history and heritage of Clare.

- View fascinating archaeological discoveries from Poul nabrone portal tomb
- Interact with the folktales and legends of County Clare.
- Submerge yourself in the story of the development of the submarine
- Discover the history of emigration from Clare

Tours available daily



Dysert O'Dea

Corofin, County Clare



Map Reference: ③

Telephone: 065-683 7305

E-mail: bredaconsidine@eircom.net

Open Daily,
May – Sep. 10.00 – 18.00 hrs.
Other times by appointment

Tea/Coffee shop and Souvenirs
and Books.

Free parking for cars.

Built in 1480, the uppermost floors and staircase were badly damaged by the Cromwellians in 1651. Repaired and opened in 1986, the castle houses an extensive museum, an audio visual presentation and various exhibitions.

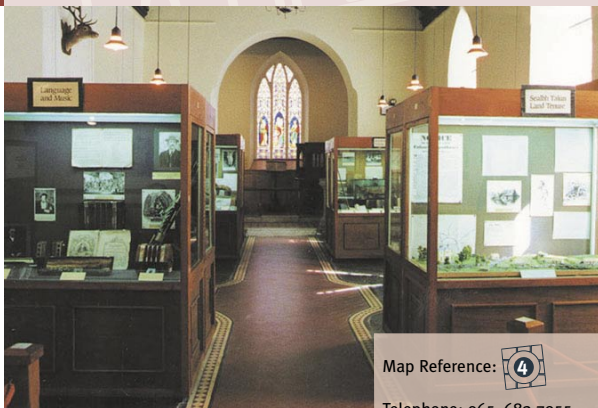



Dysert O'Dea Church stands on the site of an early christian monastery. The present building dates mainly from the 12th century. Its most famous feature is the Romanesque Doorway. Near the church's north western corner stands the remains of a Round Tower.

The High Cross, situated east of the church, dates from the 12th century and is one of the finest examples of its kind in Ireland. Archaeology/History Trail features 25 sites all within a few kilometres radius of the castle. A guide is available at the souvenir shop. Guided trail tours by prior arrangement.

Clare Heritage Centre

Corofin, Co. Clare



Map Reference: 

Telephone: 065-683 7955
Fax: 065-683 7540

E-mail: clareheritage@eircom.net
Visit: www.clareroots.com

Open Daily, May 6 – Oct. 31,
10.00 – 18.00 hrs.
Genealogical Centre open Mon–Fri
09.00–17.00 hrs. year round.

Craft shop and
Tourist Information Point.

On-street parking, for buses
and cars.



The award-winning Heritage Museum is housed in what was once St. Catherine's Church, which was built in 1718 by a first cousin of Queen Anne. Its main theme, 'Ireland West 1800-1860' portrays a traumatic period of Irish history under such headings as 'Land Tenure', 'The Famine', 'Emigration', 'Education', 'Irish Language and Music' etc. The circumstances that moulded the character of the people over one hundred years ago are interpreted in an absorbing story.


An exhibition, from The National Gallery of Ireland, on the life and times of Sir. Fredrick Burton, a former Director of the British National Gallery and a native of Corofin, is currently on display at the museum.

Also visit the Clare Genealogical Centre, widely recognised as the leading centre of its kind in the country. The centre houses the most comprehensive research material held in any one location to enable persons with Clare roots to trace their ancestry.

The Burren Centre

Kilfenora, County Clare



Map Reference: 

Telephone: 065-708 8030
Fax: 065-708 8102

E-mail: info@theburrencentre.ie
Visit: www.theburrencentre.ie

Open Daily, Mar 15 – May 31,
10.00 – 17.00 hrs.; Jun 1 – Aug 31
09.30 – 18.00 hrs.; Sep 1 – Oct 31,
10.00 – 17.00 hrs.

Tea Rooms and Craft Shop.

Free parking for buses and cars.



Beautifully displayed artefacts, original works of art and enthralling life-like reproductions of human activity combine to provide an insight into the rich heritage of the Burren. An interactive three-dimensional model of the Burren is a central feature, where computerised data on every aspect is touch-button accessible. Also available is an excellent video presentation compiled by world-renowned environmentalist, Eamonn de Buitlear.


The story of the Burren is excitingly captured in 'A walk through Time' multi-dimensional exhibition at the completely refurbished Burren Centre. The story unfolds through a series of vignettes, models, slides, artefacts and information panels. Visitors get a comprehensive introduction to the geology, flora and fauna of the region, and an understanding of the history and effects of man on the unique landscape.

Lahinch Seaworld & Leisure Centre

Lahinch, County Clare



*The ultimate all weather
leisure and activity location*

Map Reference: 

Telephone: 065-708 1900
Fax: 065-708 1901

E-mail: lahinchseaworld@eircom.net
Visit: www.lahinchseaworld.com

Open Daily, year round
Contact reception for details

Café and Retail Outlet.

Parking near centre for buses
and cars.



Spend a fun-filled day at the Seaworld indoor complex overlooking the majestic Lahinch beach. It features:

- The Seaworld Atlantic Aquarium
- A leisure centre with a 25m swimming pool, kiddies pool, sauna, jacuzzi and steamroom
- A kiddies' playzone
- A Café and retail outlet

Explore the amazing marine life of the West coast in our Atlantic Aquarium, where you can see and experience the many beautiful and unique species of our region.

Splash your way through our swimming pools and relax in our sauna, jacuzzi and steamroom. Our kiddies play area, 'Sammy Sharks', offers hours of endless fun for 2 to 10 year-olds. Finish your day with a meal in our Dolphin Diner Café after shopping in our retail outlet. All in all, the ultimate all weather leisure and activity location.

Vandeleur Walled Garden

Kilrush, County Clare



Map Reference:



Telephone: 065-905 1760

E-mail:
vandeleurwalledgarden@eircom.net
Visit: www.westclare.com

Open Daily,
Apr – Oct. 10.00 – 18.00 hrs.
Oct – Apr. 10.00 – 17.00 hrs.

Coffee Shop and Gift Shop.

Parking in Kilrush Woods for
buses and cars.

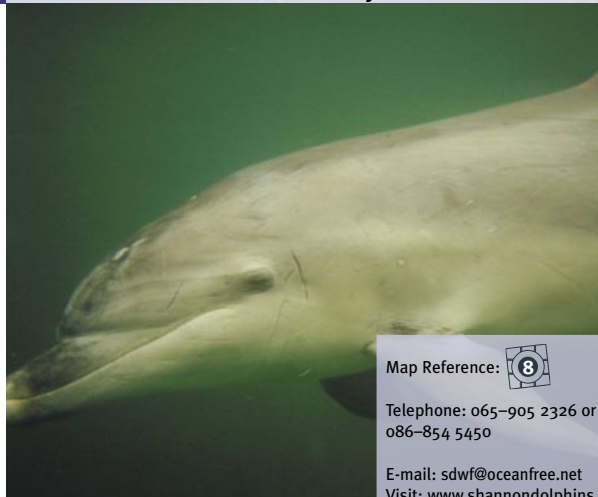
Beautifully constructed walls enclose this sheltered Walled Garden which is set among 420 acres of native woodland. Once the walled garden for Kilrush House but forgotten for many

years, restoration work began in 1997. It has been re-designed for the 21st century around the old path system and specialises in many unusual and tender plants that thrive in the area's uniquely western latitude, microclimate.

Take some time out to stroll around the garden and woodland trails or just laze by the river. The centre portion contains the nucleus of a plant collection while other aspects include a tree collection, horizontal maze and unusual water features. Finally, enjoy a cup of tea or coffee in the quiet courtyard setting of our coffee and gift shop.

Shannon Dolphins

Kilrush, County Clare



Map Reference:



Telephone: 065-905 2326 or
086-854 5450

E-mail: sdwf@oceanfree.net
Visit: www.shannondolphins.ie

Open Daily, Jun – Sep.
Other times by arrangement

The Shannon Estuary is home to the only known resident group of bottlenose dolphins in Ireland. For lots of dolfun and information on the SHANNON DOLPHINS visit the Scatterly Island Centre.

- listen to amazing sounds from dolphins in the Shannon estuary
- see real skeletons and skulls of whales, dolphins and porpoises
- learn about recent research and conservation of the Shannon dolphins
- a great educational experience for kids with lots of dolfun to enjoy.

Scatterly Island Centre
Merchants Quay, Kilrush, Co Clare.
(Adjacent to Kilrush Creek Marina)

